

Column: **MEGA-5 MS Xil** - 0.15mm, 0.10µm, 30m  
Catalog Code: MS-5XIL-015-010-30

#### Conditions:

Injection: Split 250°C, 0.2µL injection volume,  
200mL/min split flow.  
Detector: FID 330°C.  
Oven Program: 90°C, 15°C/min, 350°C.  
Carrier Gas: Hydrogen, 240kPa.

#### Sample:

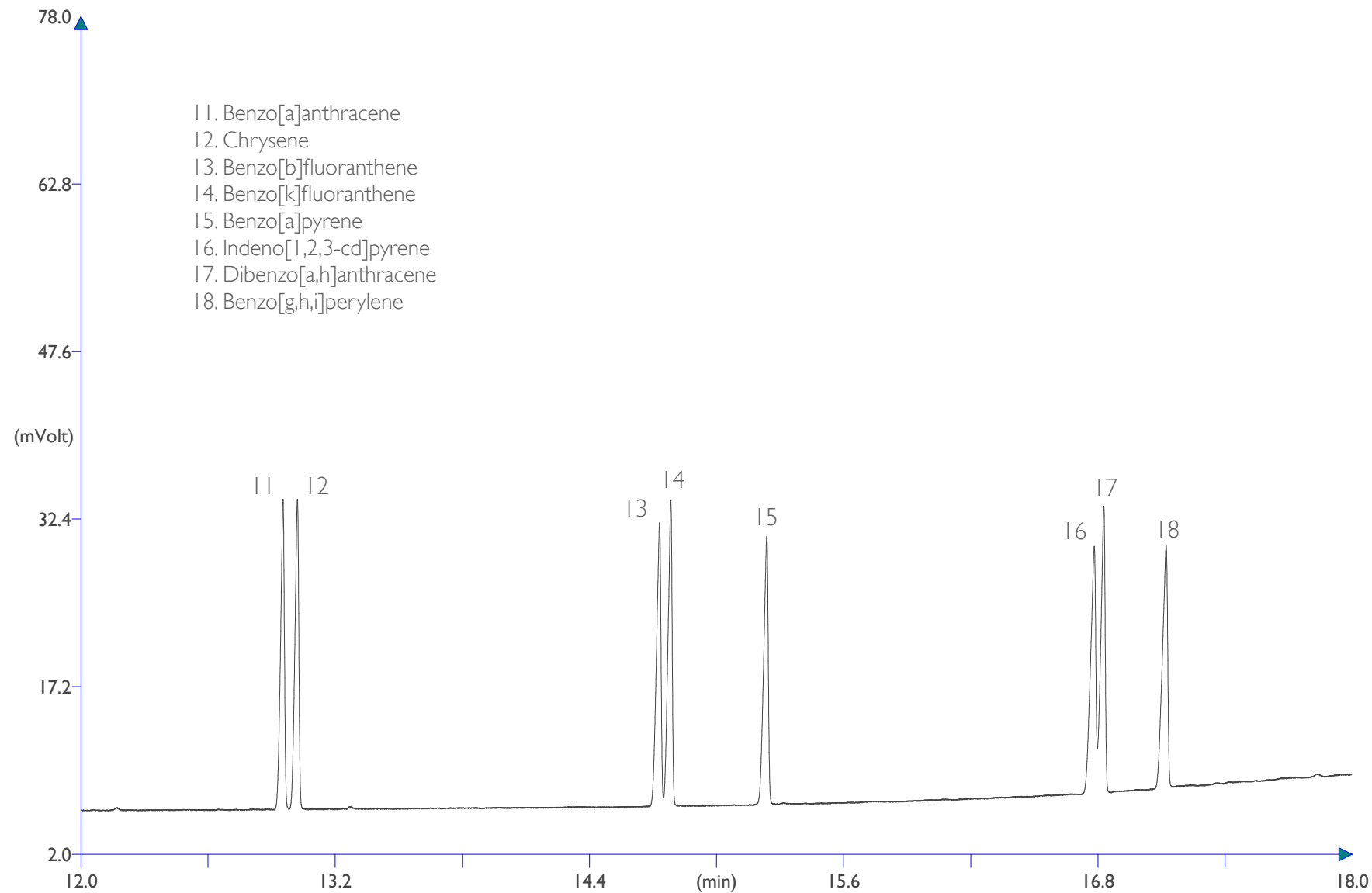
8270 Calibration Mix #5, Revised 2000µg/mL in  
Methylene Chloride.

### EPA method 610, 8100, 8270

- |                        |                            |
|------------------------|----------------------------|
| 1. Naphthalene         | 10. Pyrene                 |
| 2. 1-methylnaphthalene | 11. Benzo[a]anthracene     |
| 3. 2-methylnaphthalene | 12. Chrysene               |
| 4. Acenaphthylene      | 13. Benzo[b]fluoranthene   |
| 5. Acenaphthene        | 14. Benzo[k]fluoranthene   |
| 6. Fluorene            | 15. Benzo[a]pyrene         |
| 7. Phenanthrene        | 16. Indeno[1,2,3-cd]pyrene |
| 8. Anthracene          | 17. Dibenzo[a,h]anthracene |
| 9. Fluoranthene        | 18. Benzo[g,h,i]perylene   |

# PAHs (Polycyclic Aromatic Hydrocarbons)

mega  
5-MS Xil™  
ultra-low bleeding column



Column: **MEGA-5 MS Xil** - 0.15mm, 0.10µm, 30m  
Catalog Code: MS-5XIL-015-010-30

#### Conditions:

Injection: Split 250°C, 0.2µL injection volume,  
200mL/min split flow.  
Detector: FID 330°C.  
Oven Program: 90°C, 15°C/min, 350°C.  
Carrier Gas: Hydrogen, 240kPa.

#### Sample:

8270 Calibration Mix #5, Revised 2000µg/mL in  
Methylene Chloride.

EPA method 610, 8100, 8270

GO BACK  
TO THE ENTIRE  
CHROMATOGRAM



MEGA®

www.mega.mi.it



since  
1980



**MEGA**<sup>®</sup>  
improve your GC analysis

contact us: [info@mega.mi.it](mailto:info@mega.mi.it)



follow us [@MEGAColumns](https://twitter.com/MEGAColumns)

[www.mega.mi.it](http://www.mega.mi.it)