



## Conventional-GC analysis

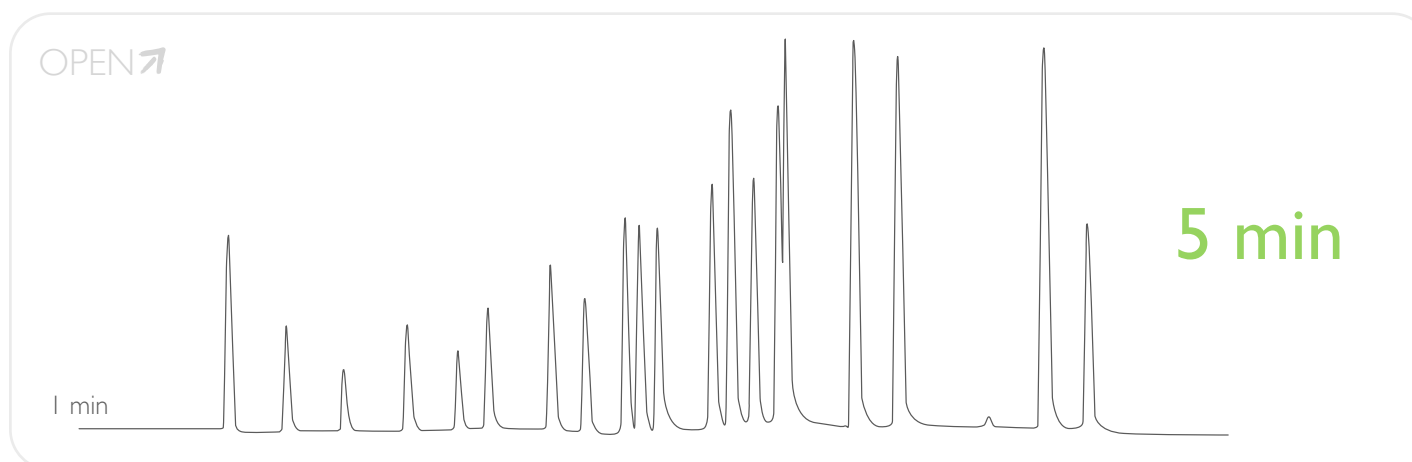
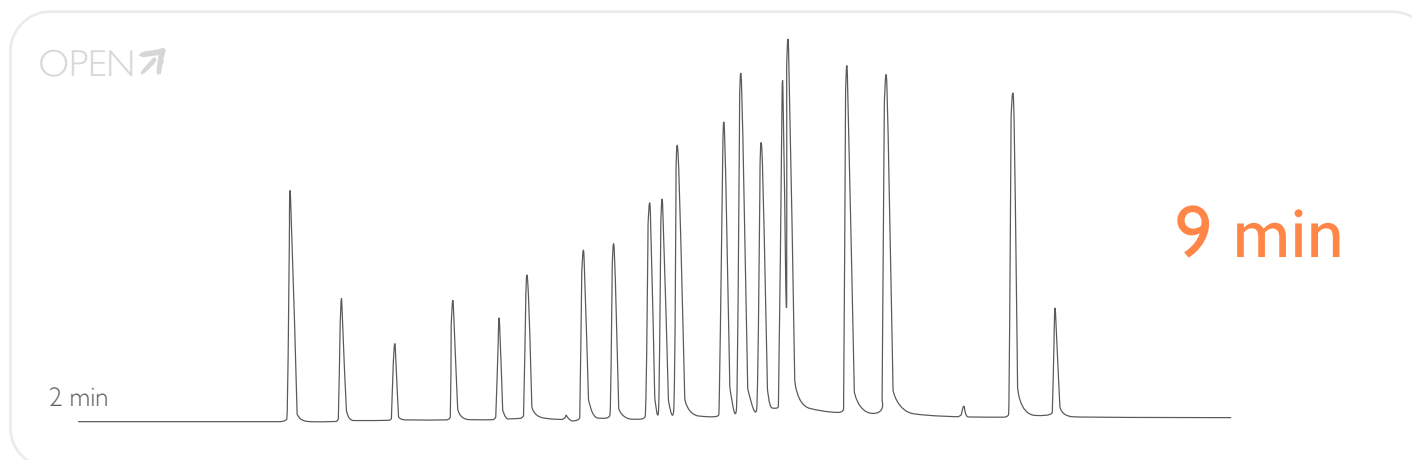
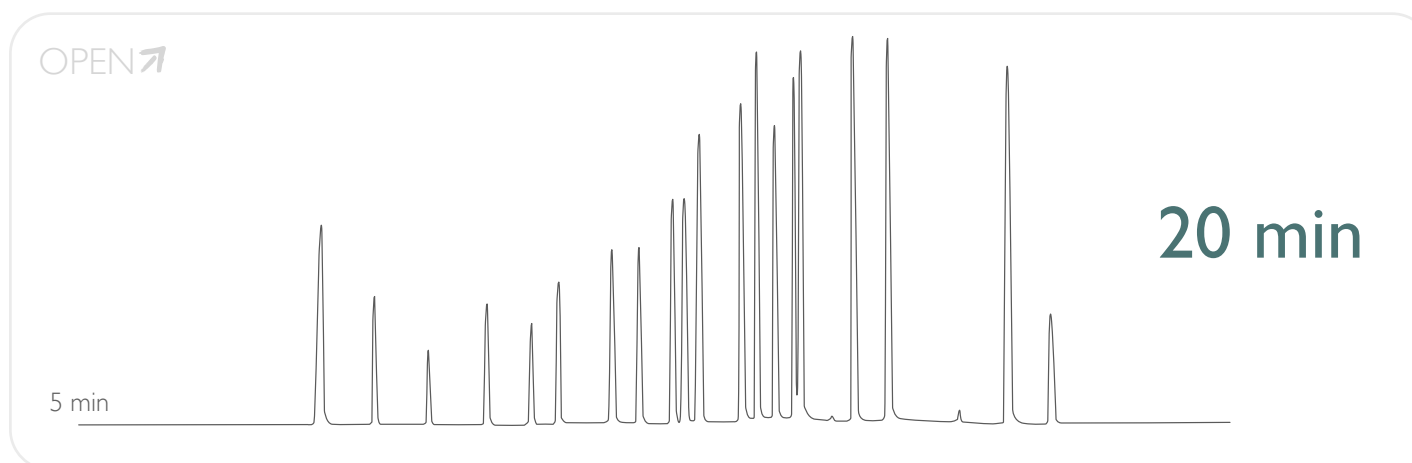
Column: **MEGA-5** - 0.25mm, 0.25 $\mu$ m, 30m  
Catalog Code: S-5-025-025-30

## FAST-GC analysis with a 10m narrow-bore column

Column: **MEGA-5 FAST** - 0.10mm, 0.20 $\mu$ m, 10m  
Catalog Code: F-5-010-020-10

## FAST-GC analysis with a 5m narrow-bore column

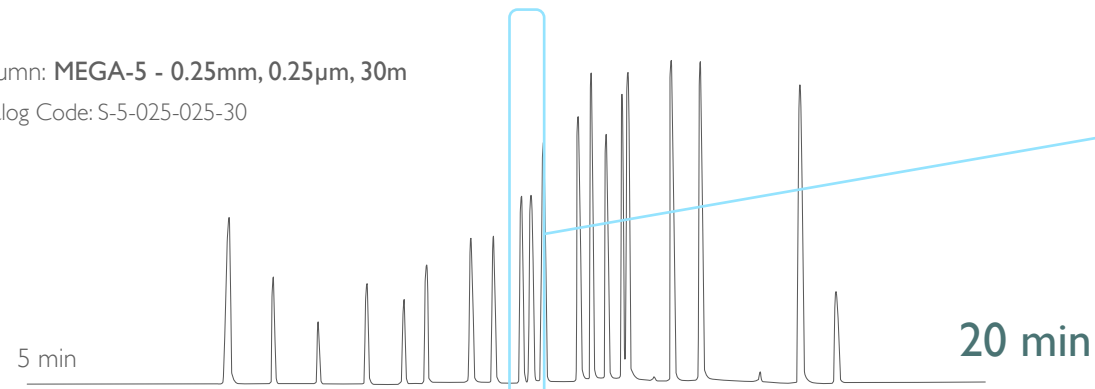
Column: **MEGA-5 FAST** - 0.10mm, 0.20 $\mu$ m, 5m  
Catalog Code: F-5-010-020-5



Analysis carried out with DANI Master GC system.



Column: MEGA-5 - 0.25mm, 0.25 $\mu$ m, 30m  
Catalog Code: S-5-025-025-30

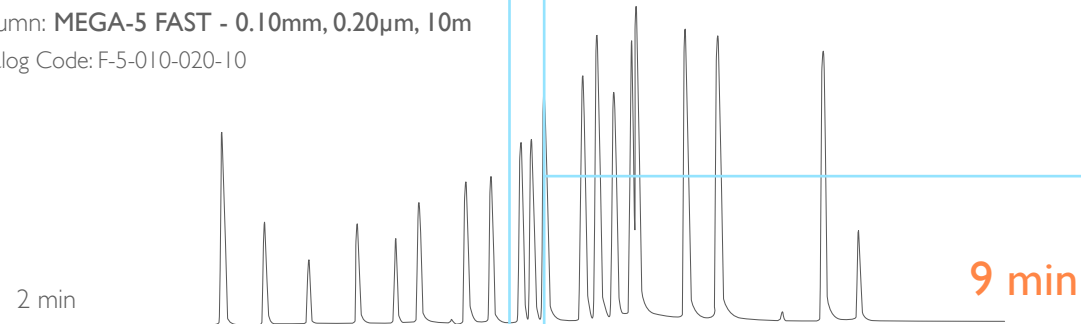


9 10

**R = 1.76**

Conventional-GC analysis

Column: MEGA-5 FAST - 0.10mm, 0.20 $\mu$ m, 10m  
Catalog Code: F-5-010-020-10

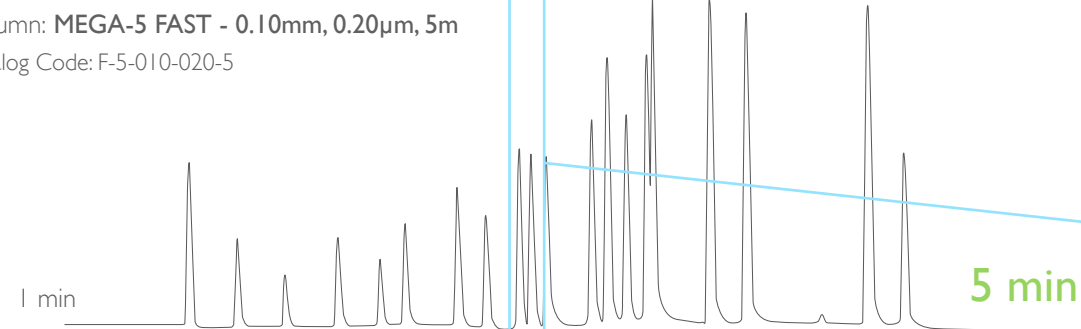


9 10

**R = 1.40**

FAST-GC analysis  
with a 10m narrow-bore column

Column: MEGA-5 FAST - 0.10mm, 0.20 $\mu$ m, 5m  
Catalog Code: F-5-010-020-5



9 10

**R = 1.21**

FAST-GC analysis  
with a 5m narrow-bore column

9. 2,2',3,4,5'-pentachlorobiphenyl  
10. 2,3,3',4',6-pentachlorobiphenyl

Analysis carried out with DANI Master GC system.



## Conventional-GC analysis

Column: **MEGA-5 - 0.25mm, 0.25µm, 30m**

Catalog Code: S-5-025-025-30

### Conditions:

Injection: PTV injector, 50°C, 600°C/min, 320°C (2min),

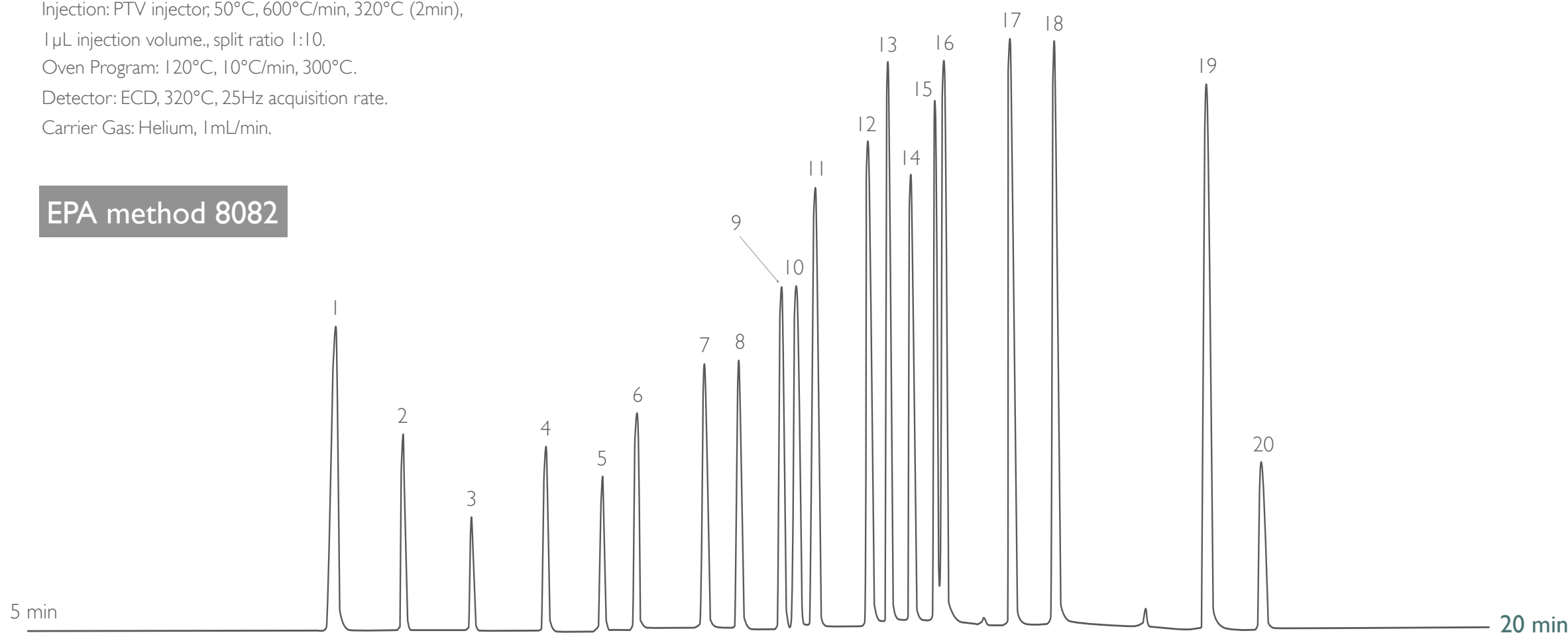
1 µL injection volume., split ratio 1:10.

Oven Program: 120°C, 10°C/min, 300°C.

Detector: ECD, 320°C, 25Hz acquisition rate.

Carrier Gas: Helium, 1 mL/min.

- |                                  |                                       |  |
|----------------------------------|---------------------------------------|--|
| 1. 2,4,5,6-tetrachloro-m-xylene  | 8. 2,2',4,5,5'-pentachlorobiphenyl    | 14. 2,2',3,4,4',5'-hexachlorobiphenyl        |
| 2. 2,3-dichlorobiphenyl          | 9. 2,2',3,4,5'-pentachlorobiphenyl    | 15. 2,2',3,4,5,5',6-heptachlorobiphenyl      |
| 3. 2,2',5'-trichlorobiphenyl     | 10. 2,3,3',4',6-pentachlorobiphenyl   | 16. 2,2',3,4,4',5',6-heptachlorobiphenyl     |
| 4. 2,4',5-trichlorobiphenyl      | 11. 2,2',3,5,5',6-hexachlorobiphenyl  | 17. 2,2',3,4,4',5,5'-heptachlorobiphenyl     |
| 5. 2,2',5,5'-tetrachlorobiphenyl | 12. 2,2',4,4',5,5'-hexachlorobiphenyl | 18. 2,2',3,3',4,4',5,5'-heptachlorobiphenyl  |
| 6. 2,2',3,5'-tetrachlorobiphenyl | 13. 2,2',3,4,5,5'-hexachlorobiphenyl  | 19. 2,2',3,3',4,4',5,5',6-nonachlorobiphenyl |
| 7. 2,3',4,4'-tetrachlorobiphenyl |                                       | 20. decachlorobiphenyl (I.S.)                |



Analysis carried out with DANI Master GC system.



## FAST-GC analysis

with a 10m narrow-bore column

Column: **MEGA-5 FAST - 0.10mm, 0.20µm, 10m**

Catalog Code: F-5-010-020-10

### Conditions:

Injection: PTV injector, 50°C, 600°C/min, 320°C (2min),

0.5µL injection volume., split ratio 1:50.

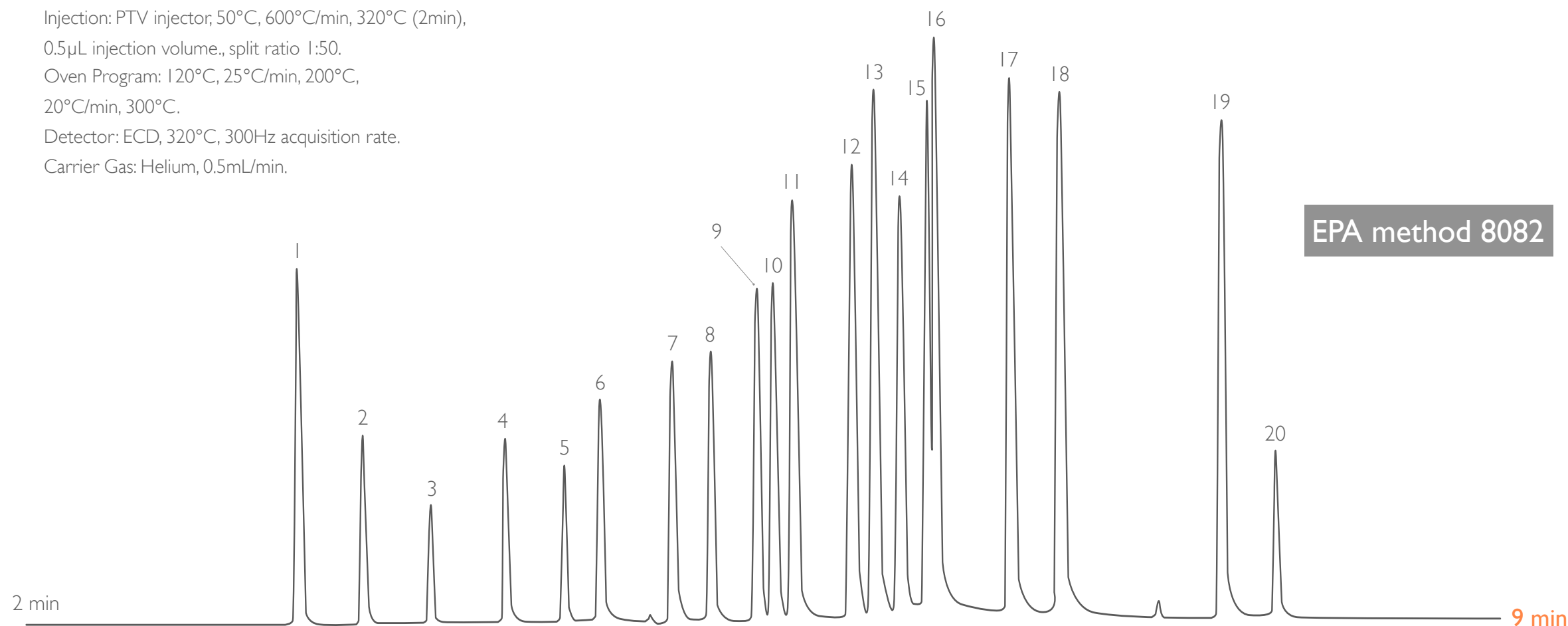
Oven Program: 120°C, 25°C/min, 200°C,

20°C/min, 300°C.

Detector: ECD, 320°C, 300Hz acquisition rate.

Carrier Gas: Helium, 0.5mL/min.

- |                                  |                                       |  |
|----------------------------------|---------------------------------------|--|
| 1. 2,4,5,6-tetrachloro-m-xylene  | 8. 2,2',4,5,5'-pentachlorobiphenyl    | 14. 2,2',3,4,4',5'-hexachlorobiphenyl        |
| 2. 2,3-dichlorobiphenyl          | 9. 2,2',3,4,5'-pentachlorobiphenyl    | 15. 2,2',3,4',5,5',6-heptachlorobiphenyl     |
| 3. 2,2',5'-trichlorobiphenyl     | 10. 2,3,3',4',6-pentachlorobiphenyl   | 16. 2,2',3,4,4',5',6-heptachlorobiphenyl     |
| 4. 2,4',5-trichlorobiphenyl      | 11. 2,2',3,5,5',6-hexachlorobiphenyl  | 17. 2,2',3,4,4',5,5'-heptachlorobiphenyl     |
| 5. 2,2',5,5'-tetrachlorobiphenyl | 12. 2,2',4,4',5,5'-hexachlorobiphenyl | 18. 2,2',3,3',4,4',5-heptachlorobiphenyl     |
| 6. 2,2',3,5'-tetrachlorobiphenyl | 13. 2,2',3,4,5,5'-hexachlorobiphenyl  | 19. 2,2',3,3',4,4',5,5',6-nonachlorobiphenyl |
| 7. 2,3',4,4'-tetrachlorobiphenyl |                                       | 20. decachlorobiphenyl (I.S.)                |



Analysis carried out with DANI Master GC system.



## FAST-GC analysis

with a 5m narrow-bore column

Column: **MEGA-5 FAST - 0.10mm, 0.20µm, 5m**

Catalog Code: F-5-010-020-5

### Conditions:

Injection: PTV injector, 50°C, 600°C/min, 320°C (2min),

0.5µL injection volume., split ratio 1:50.

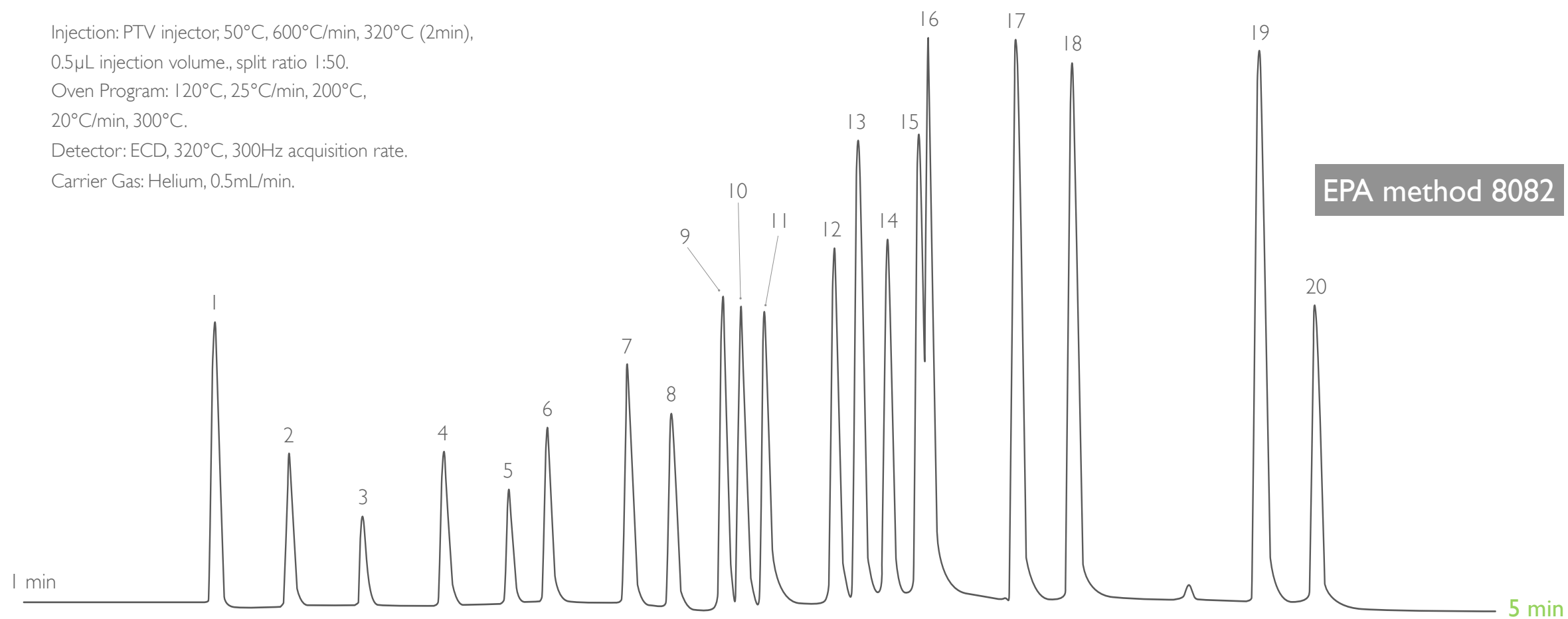
Oven Program: 120°C, 25°C/min, 200°C,

20°C/min, 300°C.

Detector: ECD, 320°C, 300Hz acquisition rate.

Carrier Gas: Helium, 0.5mL/min.

- |                                  |                                       |  |
|----------------------------------|---------------------------------------|--|
| 1. 2,4,5,6-tetrachloro-m-xylene  | 8. 2,2',4,5,5'-pentachlorobiphenyl    | 14. 2,2',3,4,4',5'-hexachlorobiphenyl        |
| 2. 2,3-dichlorobiphenyl          | 9. 2,2',3,4,5'-pentachlorobiphenyl    | 15. 2,2',3,4',5,5',6-heptachlorobiphenyl     |
| 3. 2,2',5'-trichlorobiphenyl     | 10. 2,3,3',4',6-pentachlorobiphenyl   | 16. 2,2',3,4,4',5',6-heptachlorobiphenyl     |
| 4. 2,4',5-trichlorobiphenyl      | 11. 2,2',3,5,5',6-hexachlorobiphenyl  | 17. 2,2',3,4,4',5,5'-heptachlorobiphenyl     |
| 5. 2,2',5,5'-tetrachlorobiphenyl | 12. 2,2',4,4',5,5'-hexachlorobiphenyl | 18. 2,2',3,3',4,4',5-heptachlorobiphenyl     |
| 6. 2,2',3,5'-tetrachlorobiphenyl | 13. 2,2',3,4,5,5'-hexachlorobiphenyl  | 19. 2,2',3,3',4,4',5,5',6-nonachlorobiphenyl |
| 7. 2,3',4,4'-tetrachlorobiphenyl |                                       | 20. decachlorobiphenyl (I.S.)                |



Analysis carried out with DANI Master GC system.



contact us: [info@mega.mi.it](mailto:info@mega.mi.it)

 follow us [@MEGAColumns](https://twitter.com/MEGAColumns)

[www.mega.mi.it](http://www.mega.mi.it)

*since*  
**1980** 